

RED OAK
REALTY

FOR INFORMATION:
500 WEST 7TH ST, SUITE 400
FORT WORTH, TEXAS 76102

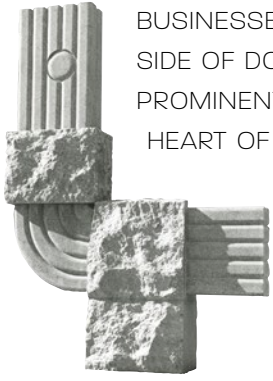
817.877.3300
FAX 817.877.3310

WWW.ROREALTY.COM
WWW.FIRSTON7TH.COM



MODERN AMENITIES MODERN STYLE

DISCOVER THE PERFECT SPACE FOR YOUR BUSINESS AT FIRST ON 7TH, A PREMIER EXAMPLE OF MIDCENTURY MODERNIST STYLE. DESIGNED BY WORLD-RENOWNED ARCHITECTS SKIDMORE, OWINGS AND MERRILL IN 1961, THIS 21-STORY TOWER BOASTS FAMOUS SCULPTURES BY ISAMU NOGUCHI, SKYLINE VIEWS, AND A DIVERSE GROUP OF PROFESSIONAL



BUSINESSES. LOCATED ON 7TH STREET ON THE WEST SIDE OF DOWNTOWN FORT WORTH, FIRST ON 7TH IS A PROMINENT FIXTURE OF THE SKYLINE AND IS AT THE HEART OF A DYNAMIC ENVIRONMENT WHERE PEOPLE CAN WORK AND DINE COMFORTABLY. IT'S MORE THAN JUST A TRIBUTE TO THE PAST, IT'S THE FOCAL POINT FOR THE FUTURE OF AN EVOLVING DOWNTOWN FORT WORTH.

Noguchi sculpture on the plaza

\$28.00/RSF. PLUS ELECTRICITY	FLOOR	2ND	10TH	14TH	16TH
	SQ FT	23,841	11,555	11,714	11,718

COMPLETE FLOOR PLATES AVAILABLE FOR LARGER COMPANIES & CORPORATE CLIENTS.



GROUND FLOOR:

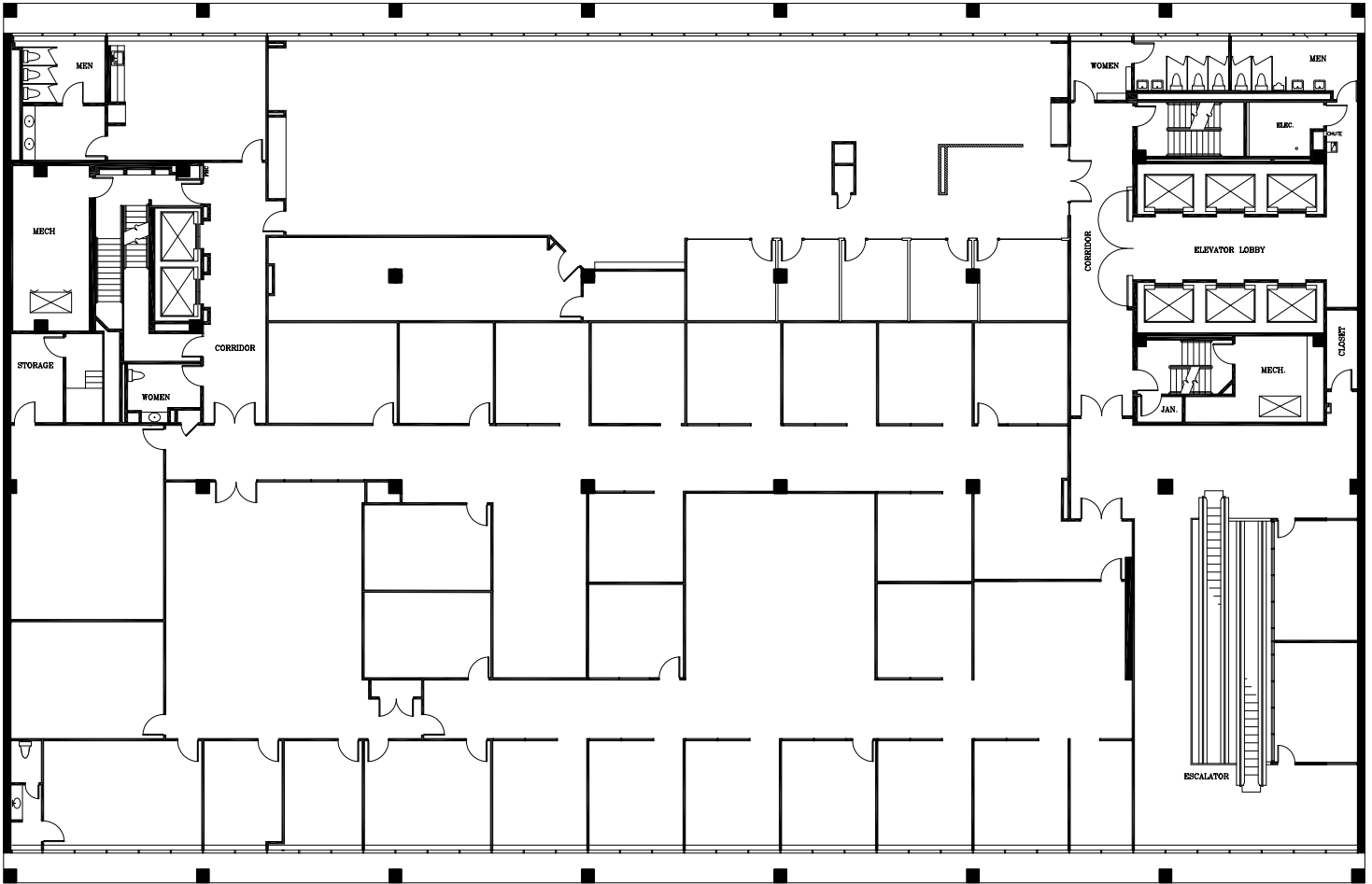
The People, The Places, The Pasta

Experience a variety of dining options right at your doorstep at First on 7th. Start your day off right with a delicious coffee from Buon Giorno Coffeehouse and Roastery. For lunch, grab a sandwich or salad from Neighbors House Grocery, and maybe grab a bottle of wine for after work. If you are looking for a special evening out, or you need to entertain some clients, indulge in some traditional Italian dishes at 61 Osteria. The new upscale Italian restaurant by Adam Jones of Grace focuses on simple, seasonal ingredients sourced from the highest quality local farmers and features floor to ceiling windows with park views to the south.



AMENITIES



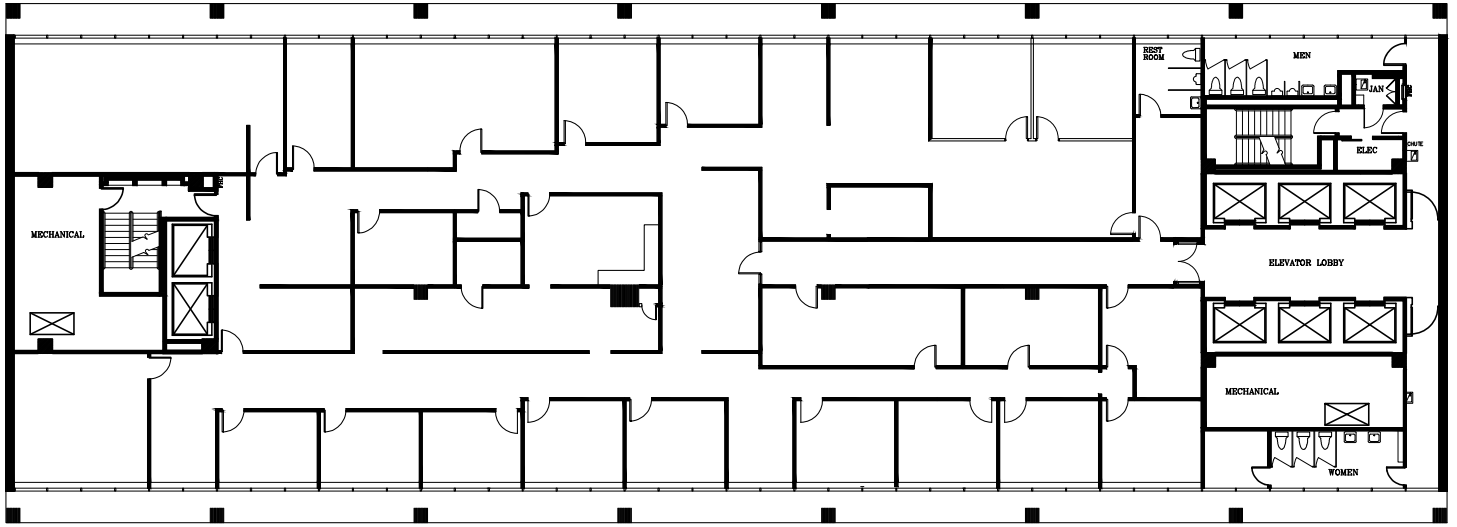



2nd Floor

2ND FLOOR | 23,841 SQ. FT.



Floor 10

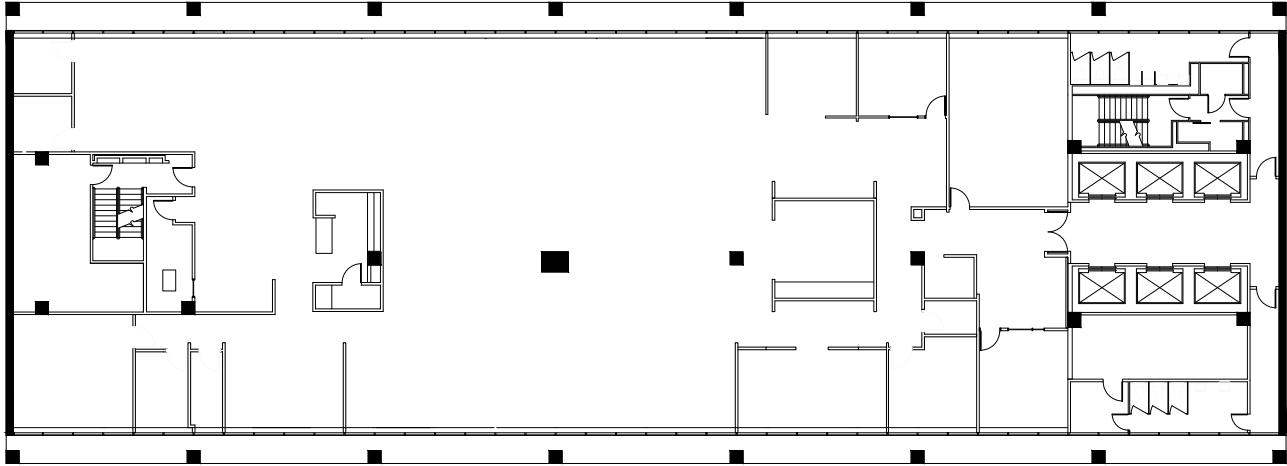


 10TH FLOOR

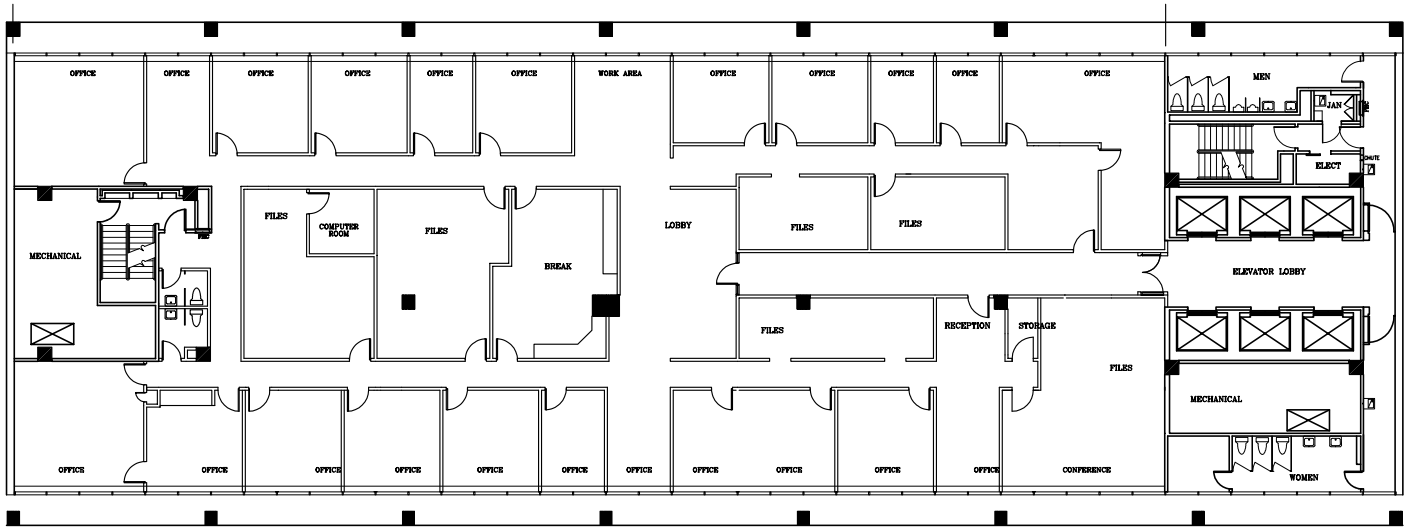
10TH FLOOR | 11,555 SQ. FT.



Floor 14



14TH FLOOR | 11,714 SQ. FT.



16th Floor 

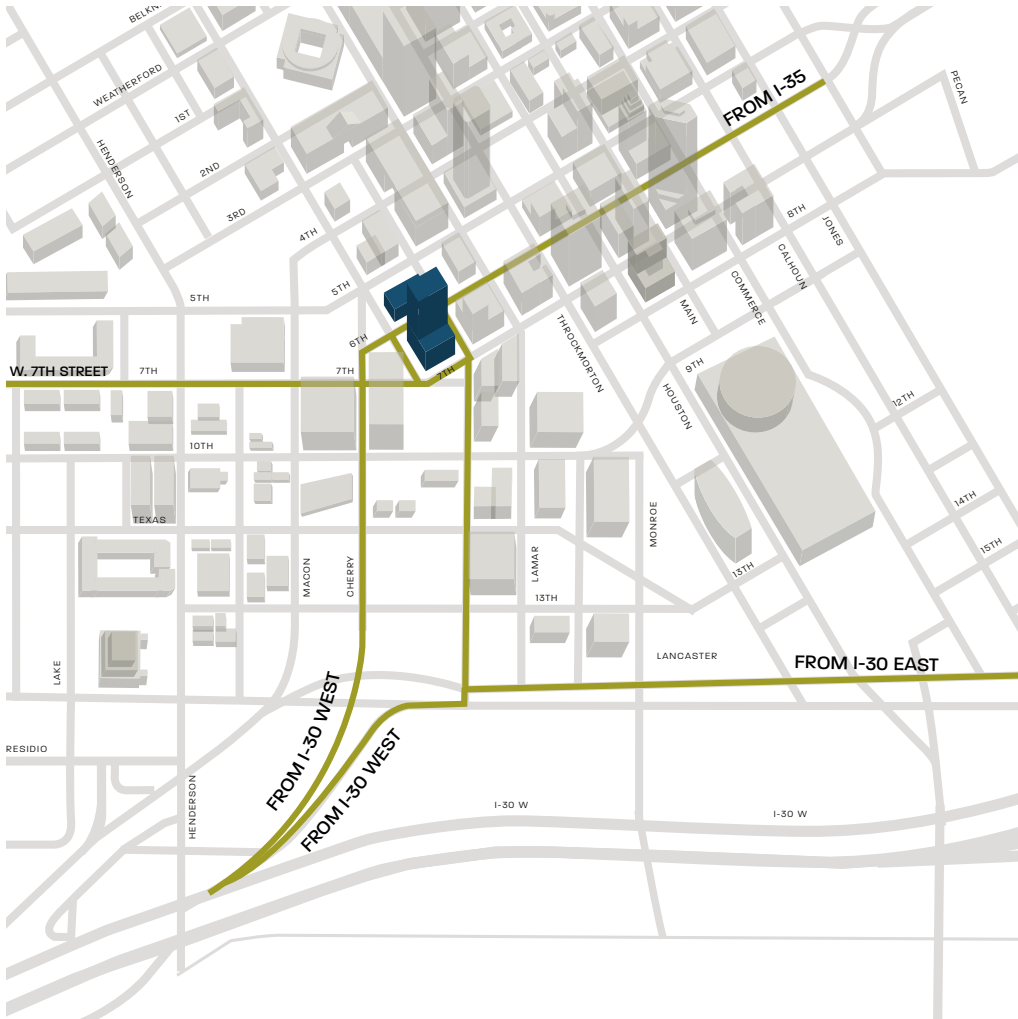
16TH FLOOR | 11,718 SQ. FT.

RECENT TENANT FINISH OUT ON 15th FLOOR





EASY IN. EASY OUT.



Clients, Visitors Patrons and Business Professionals

First on 7th is one of the most easily accessible buildings in Downtown Fort Worth. With entrances on 3 sides of the building and a connected parking garage across the street, clients, employees, and restaurant goers have no trouble finding their way into our doors. Come see for yourself.