



FOR LEASE | MEDICAL

Rosedale Medical Plaza | 1106 Alston Avenue | Fort Worth, Texas



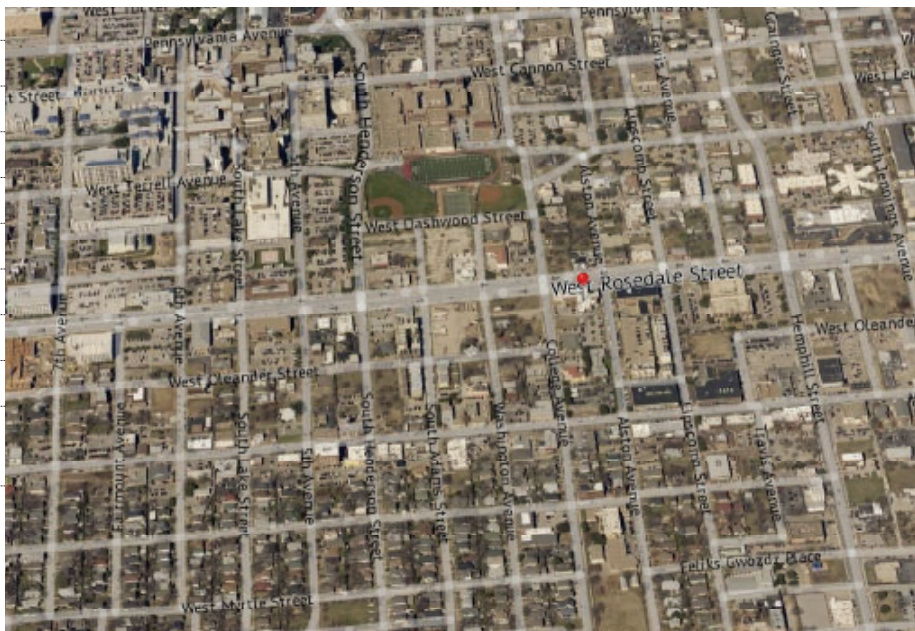
\$25.00/RSF. NNN

Building Information

- Two Story Class A Medical Building
- Fast growing Near Southside Area
- Parking in the Magnolia Green Parking Garage
- Quick access to Downtown Fort Worth
- Traffic count on Rosedale Avenue - 20,360 VPD
- Walkability is moderate
- Public transportation available nearby
- Easy access to I-35W and I-30
- Existing tenants: Gateway Diagnostics, Nova Healthcare and LabCorp

Available Space

- Suite 100 - 5,068 RSF.
- Suite 225 - 780 RSF.



PROPERTY CONTACT

JACK CLARK	817.336.4002	JCLARK@ROREALTY.COM
STEPHANIE GWIZDZ	817.336.4007	SGWIZDZ@ROREALTY.COM
MAIN OFFICE	817.877.3300	ROREALTY.COM

The information contained in this property flyer is deemed to be reliable. Every effort was made to obtain accurate and complete information; however no representation, warranty or guarantee, expressed or implied, may be made as to the accuracy or reliability of the information contained herein.